

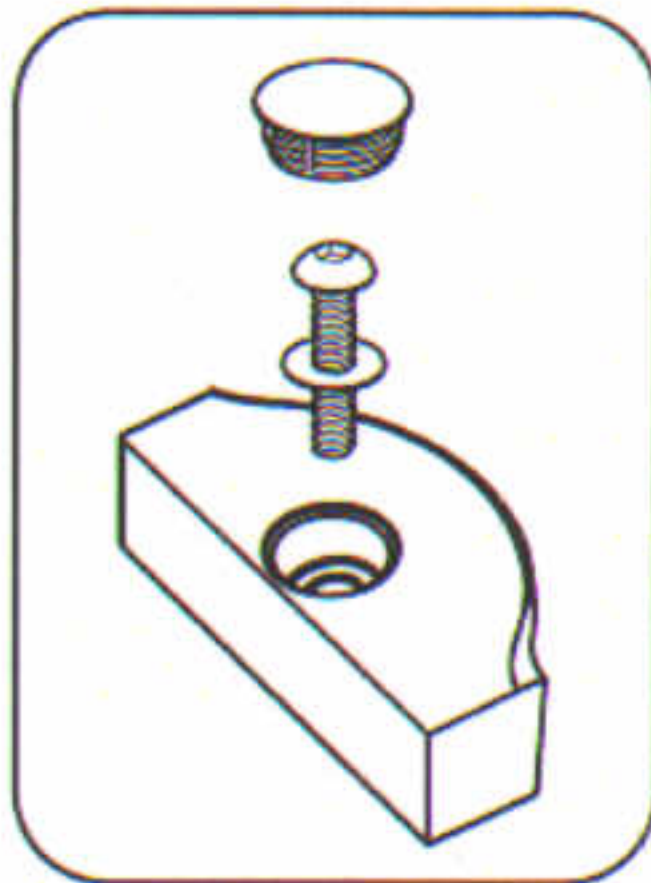
## FLEXMASTER™ MK II (c/w Ultra Socket) INSTALLATION INSTRUCTIONS



Ensure that personnel carrying out this conversion have the relevant qualifications/certificates. Ensure that all relevant personnel read the points listed within this leaflet and that a copy is given to staff involved with the installation and maintenance of this product. Glasdon recommends that a full Health and Safety analysis is carried out prior to installation.

### KIT CONTENTS

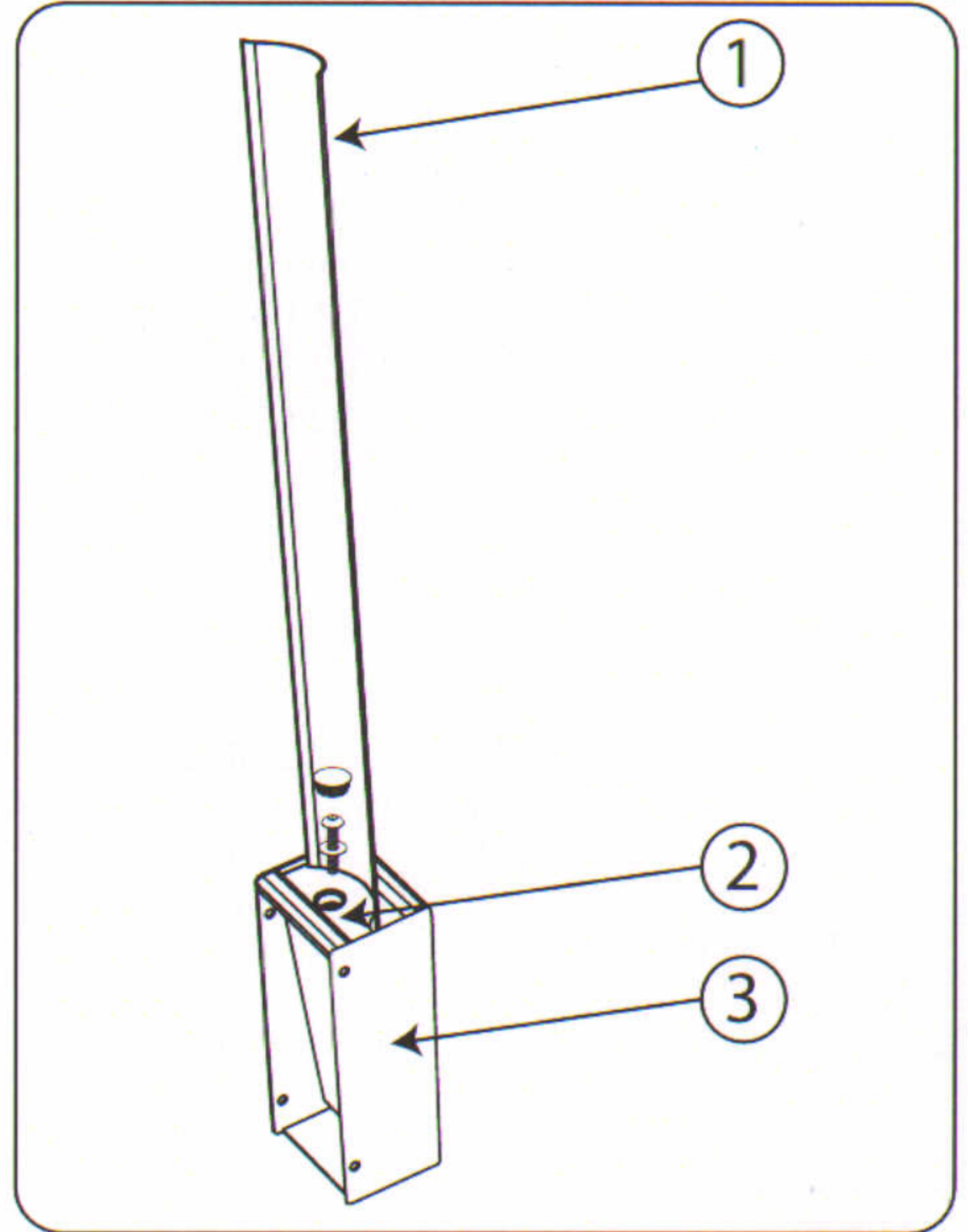
- ① UPRIGHT
- ② REAR SOCKET COVER
  - Screw Cover
  - M10 Screw
  - M10 Washer
  - 6mm Allen Key



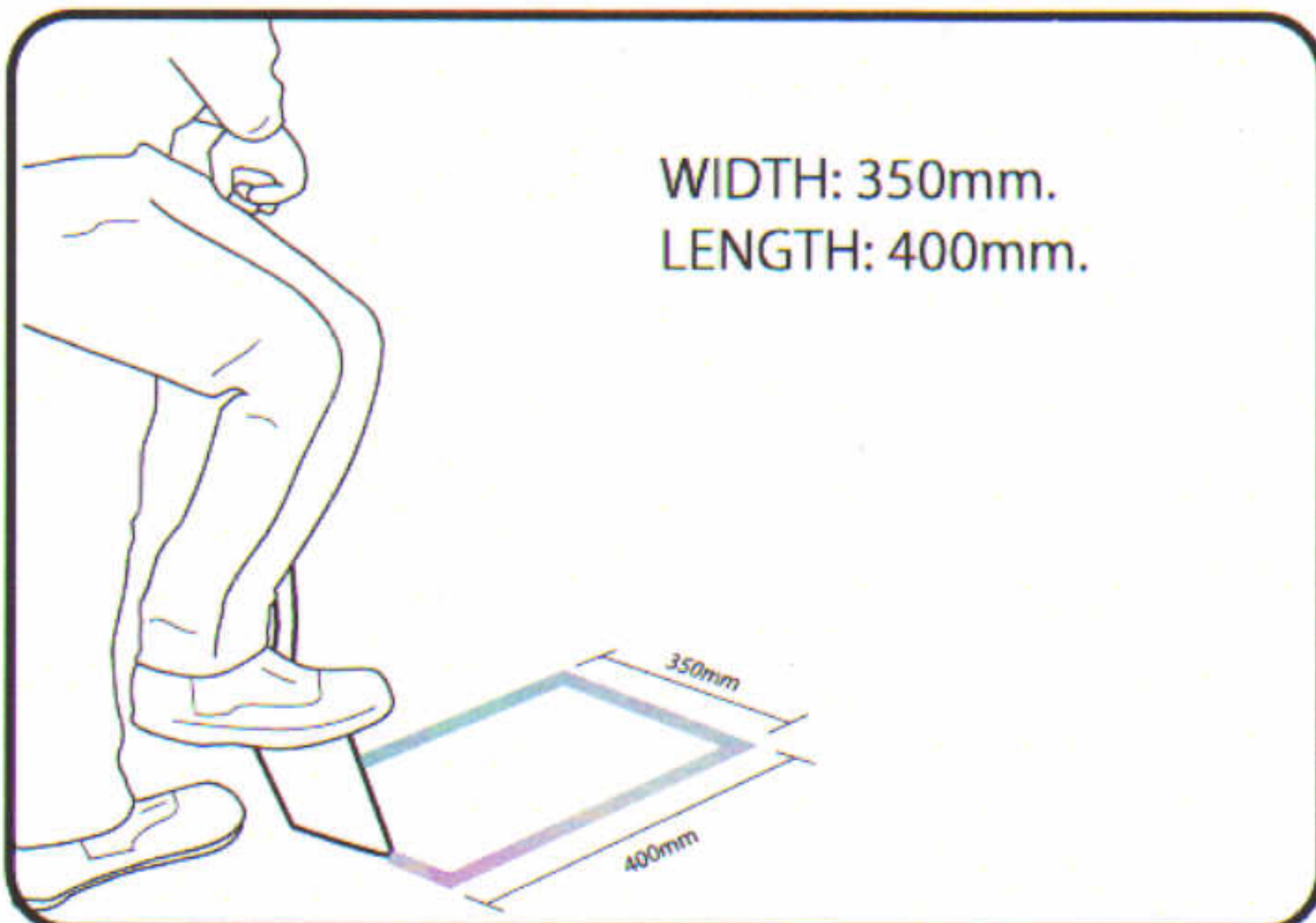
- ③ STEEL SOCKET

### EQUIPMENT REQUIRED

- Spade or Jack Hammer if required
- Spirit Level
- Rubber Hammer
- Appropriate Lubricant or Grease for screw threads
- Concrete Mix (we recommend using a quick setting concrete i.e. QC10 for all installations)
- Relevant Safety Equipment (hard hat, mask, goggles, reflective clothing, gloves, etc)

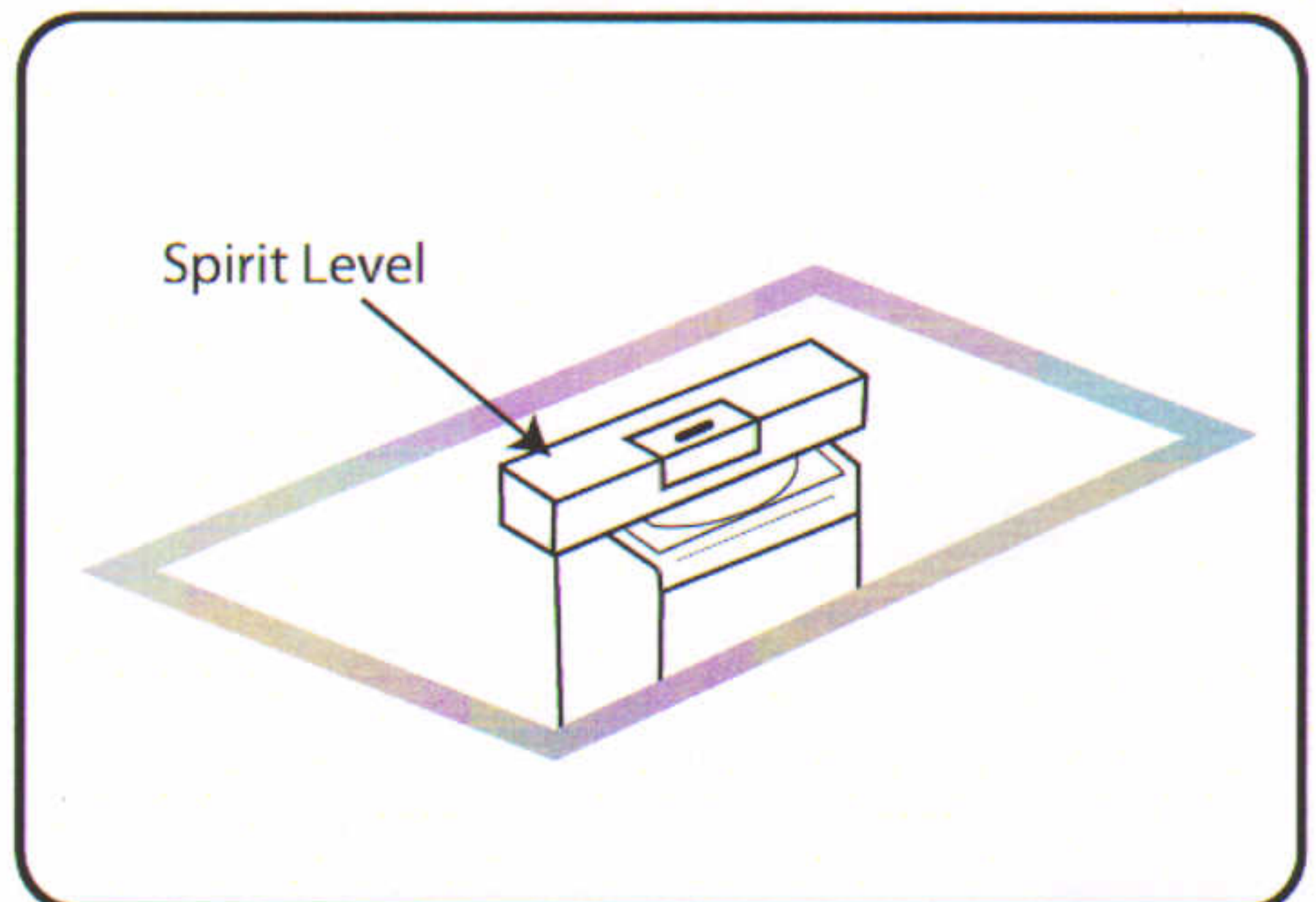


### SOCKET INSTALLATION



WIDTH: 350mm.  
LENGTH: 400mm.

Measure the size of the hole to be excavated. Check for buried services then dig the hole to a depth of 450mm. Line the hole with 50mm of gravel for drainage and ensure base of hole is flat.



Position the socket into the hole. Ensure socket is level, add/remove gravel as required.

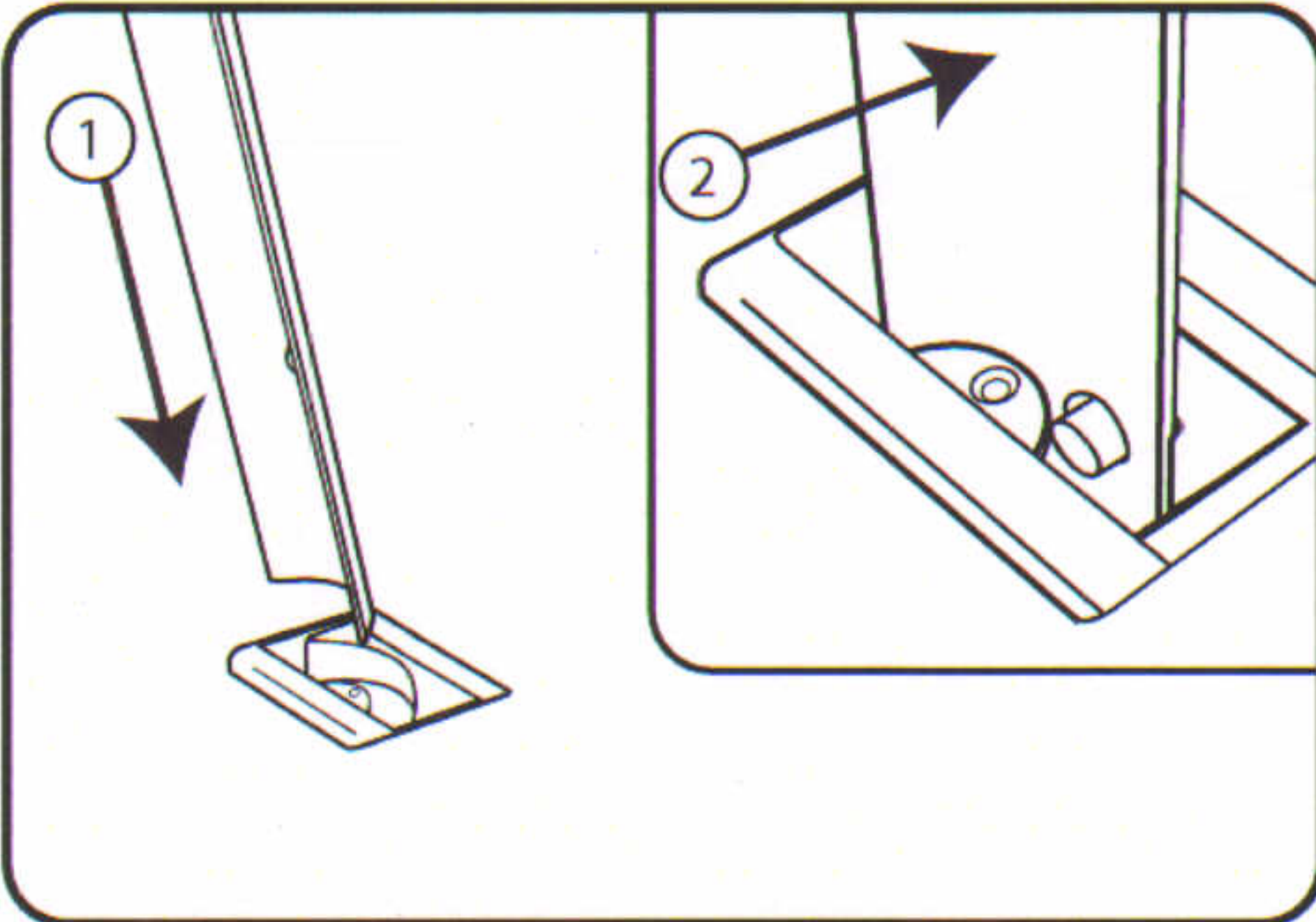


## SOCKET INSTALLATION continued

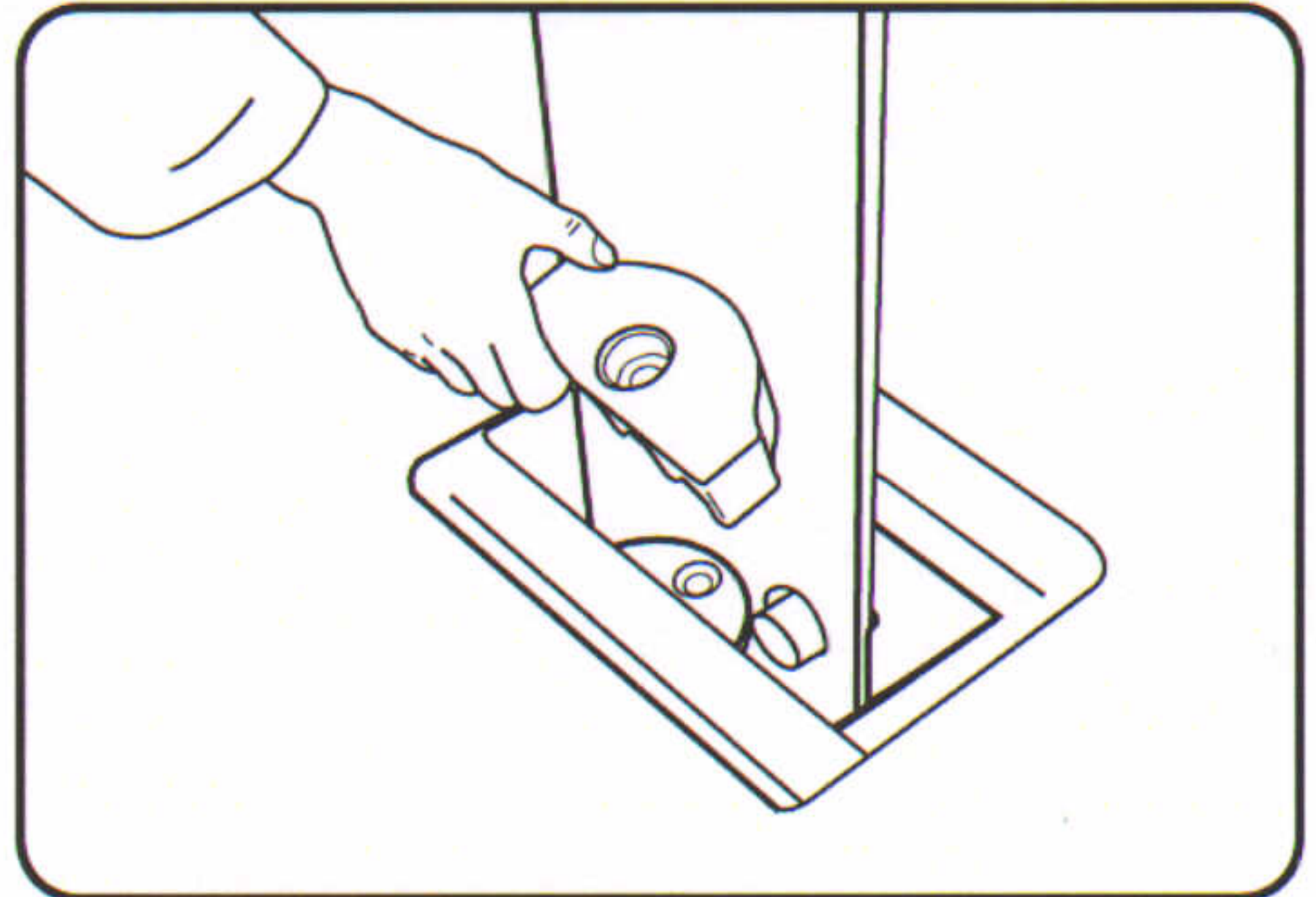


Using a quick setting concrete fill around the socket and smooth for a neat finish. Clean any debris from the top of the socket.

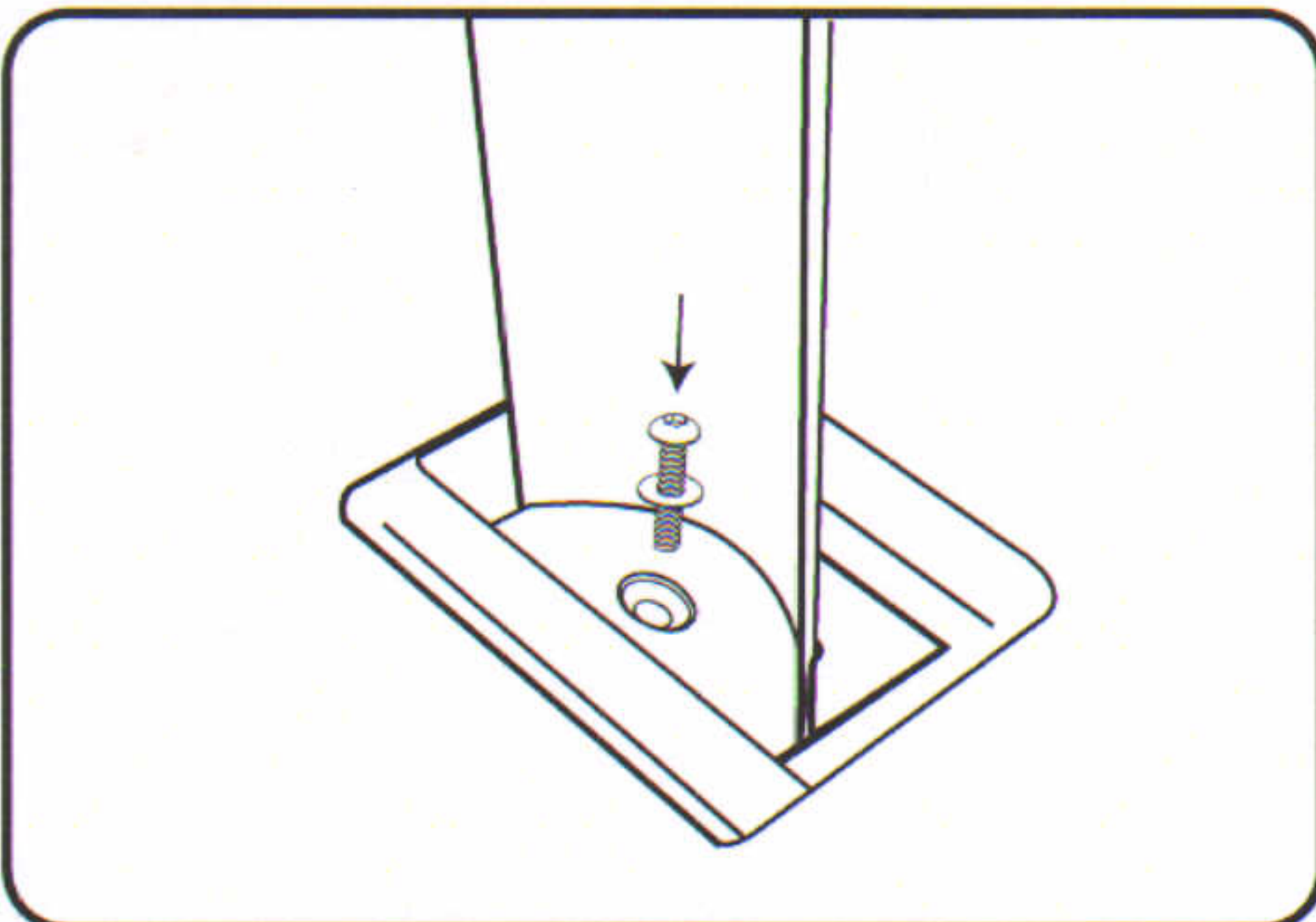
## UPRIGHT INSTALLATION



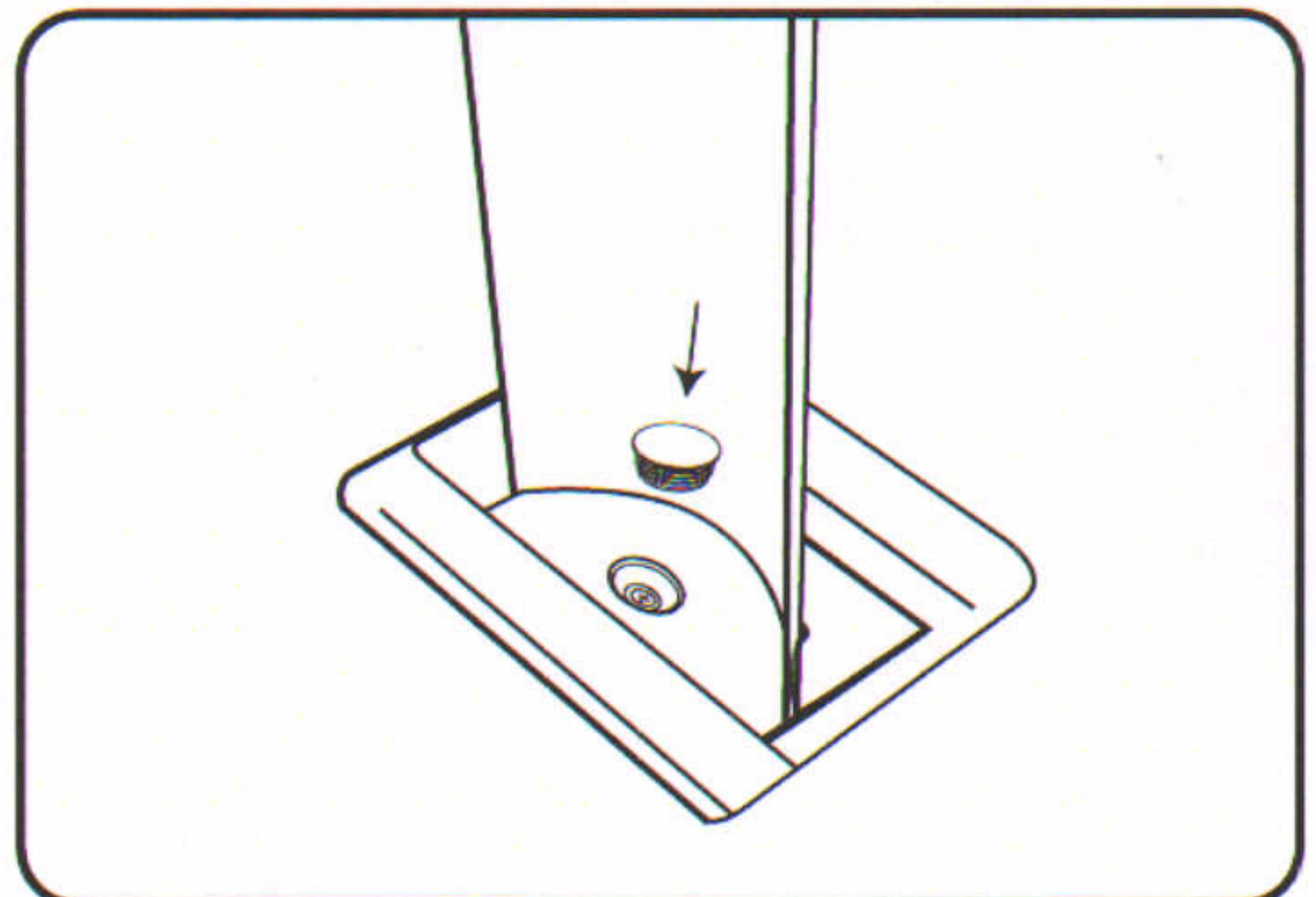
Insert the upright into the socket at a slight angle and push forward to locate hole in upright onto the pin in the socket.



Insert socket cover by hand and use a rubber hammer to secure into place.



Fix the socket covers to the socket using the M10 screw and washer provided. Tighten using the 6mm allen key provided.

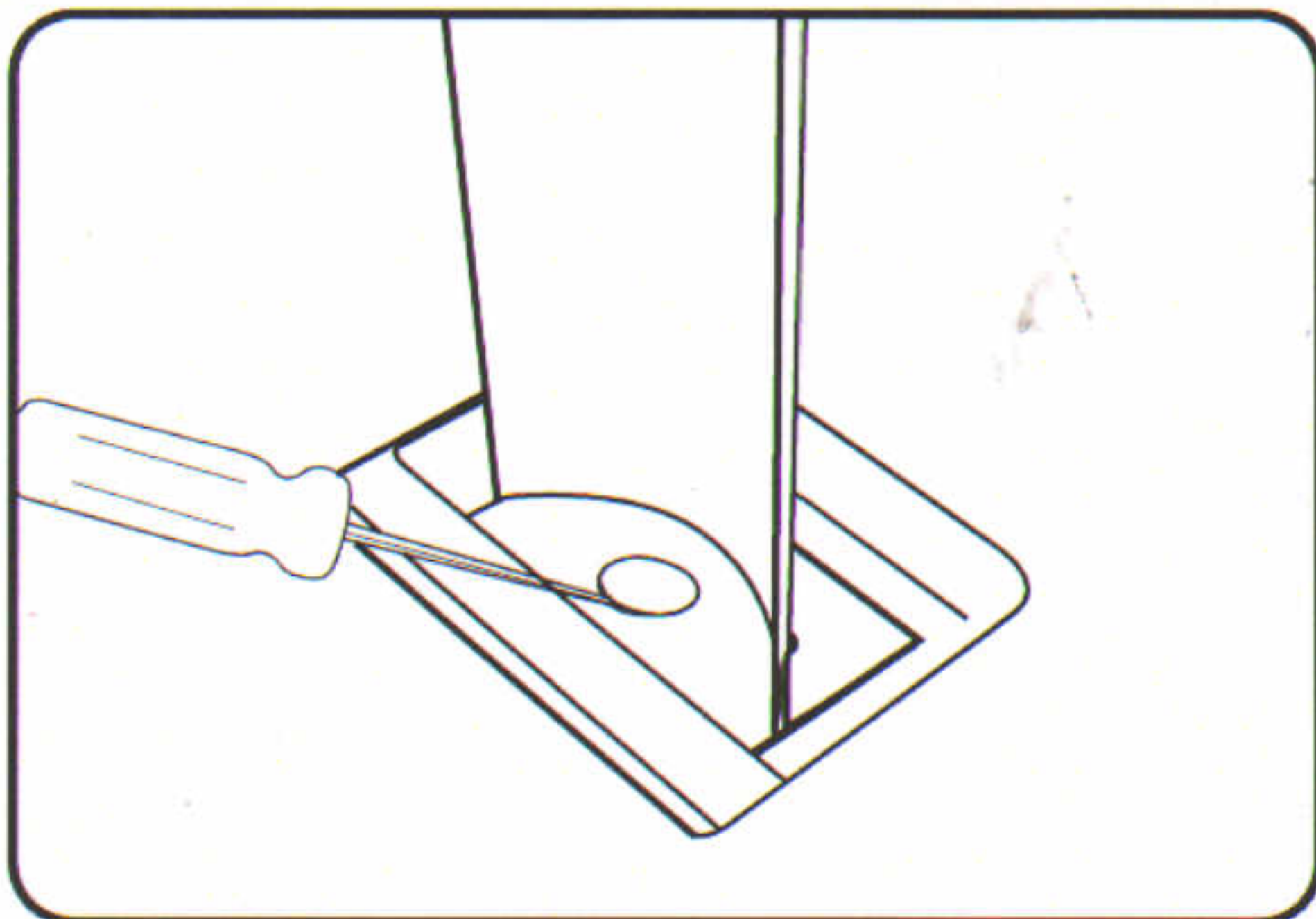


Position the screw cover over the tightened screw and secure into place using a rubber hammer.

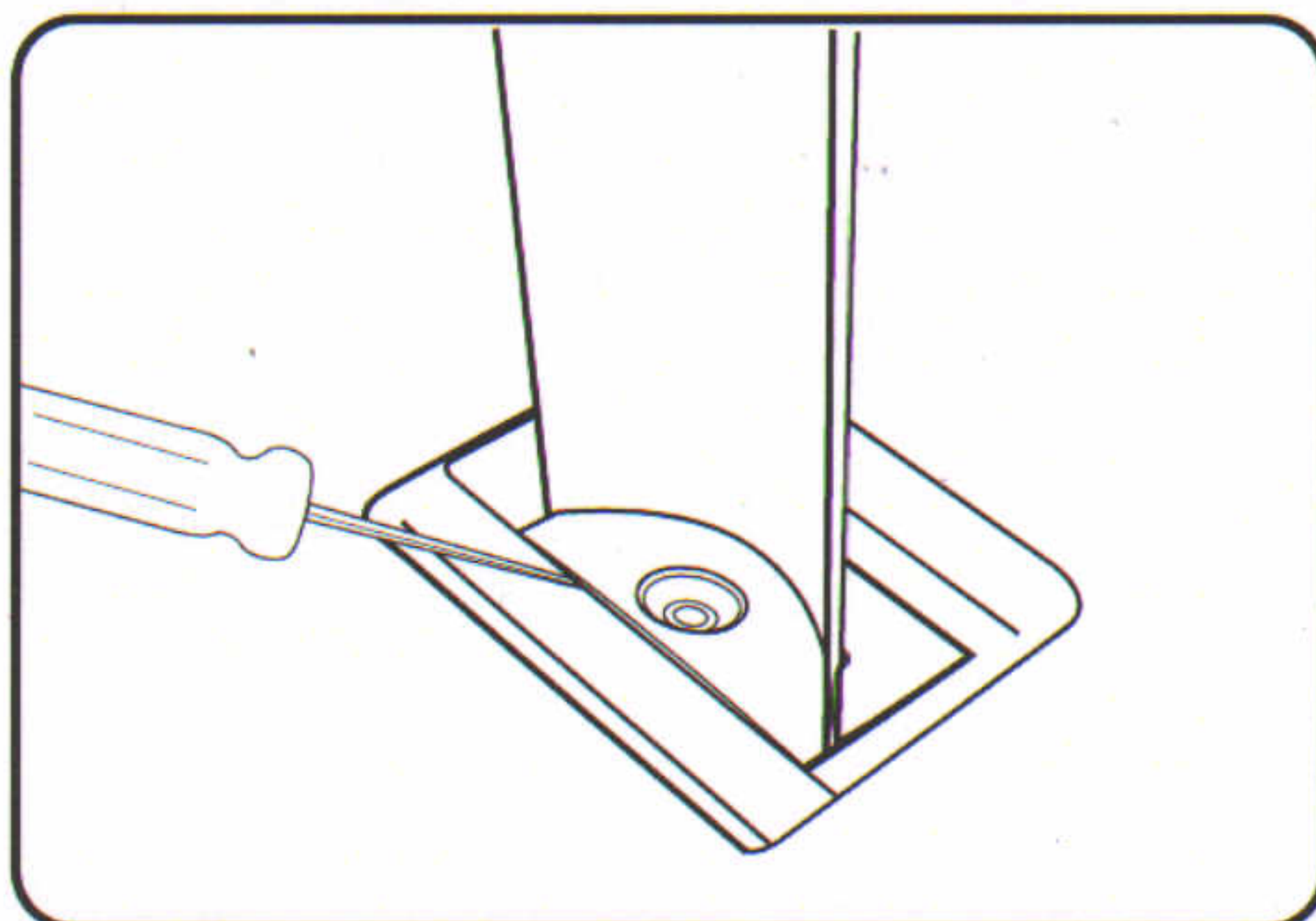


## REPLACING DAMAGED UPRIGHTS

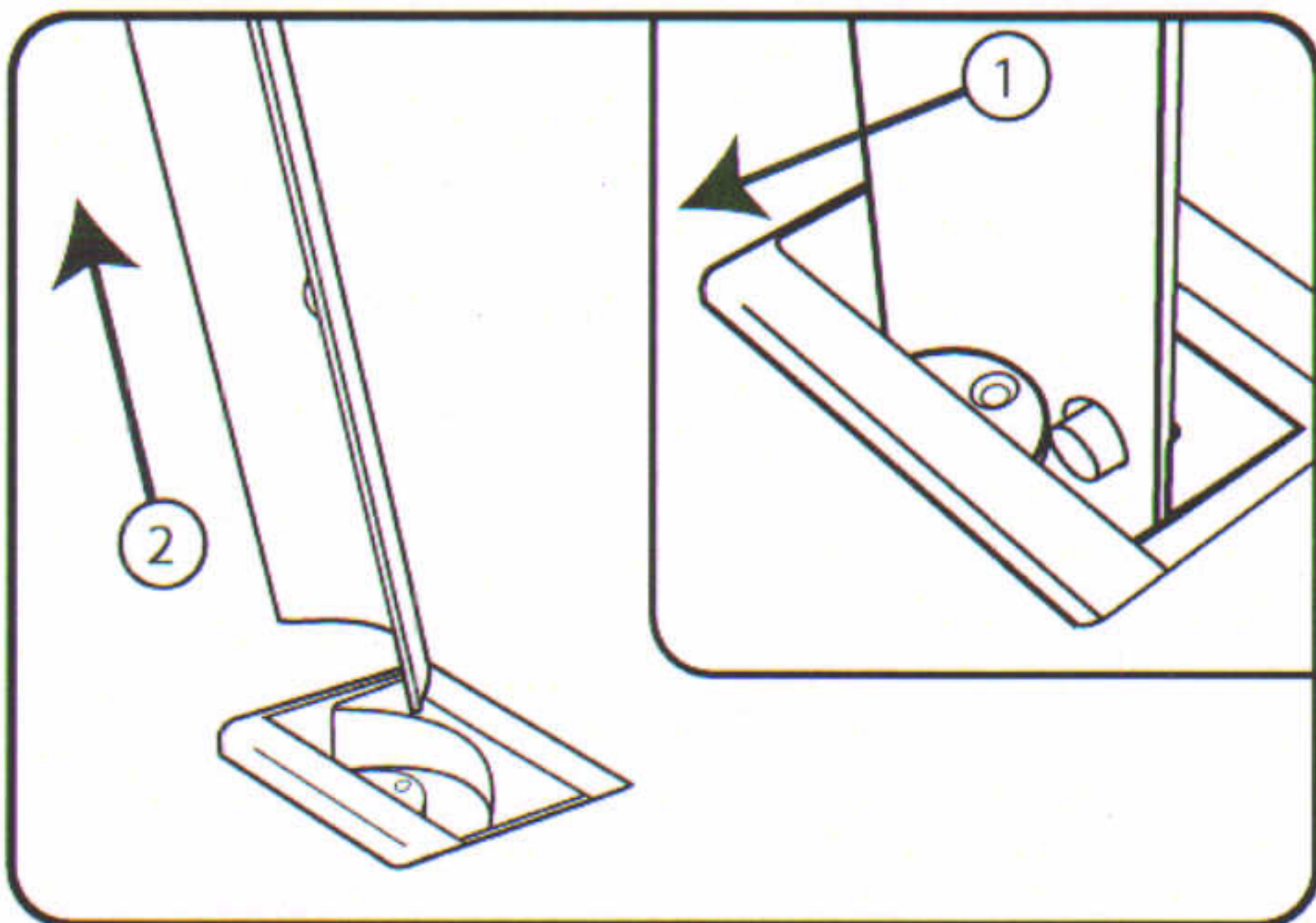
### REMOVING THE DAMAGED UPRIGHTS



Remove the Screw Cover from behind the damaged upright. To do this use a flat head screw driver or similar to prise the cover off. Remove the screw from beneath using a 6mm allen key.



Remove the socket cover in a similar way to the removal of the screw cover.



Tilt back Upright and lift out of socket.

### INSTALLING REPLACEMENT UPRIGHTS

Refer to page 2 for 'Upright Installation'.

**IMPORTANT NOTE:** PLEASE ENSURE THAT ALL RELEVANT PERSONNEL READ THE POINTS LISTED WITHIN THIS LEAFLET AND THAT A COPY IS GIVEN TO STAFF INVOLVED WITH THE INSTALLATION AND MAINTENANCE OF THIS PRODUCT.

**SAFETY NOTE:** PLEASE REFER TO 'THE MANUAL HANDLING OPERATIONS REGULATIONS 1992' DURING HANDLING.



AND FLEXMASTER ARE TRADEMARKS OR REGISTERED TRADEMARKS OF GLASDON GROUP OR ITS SUBSIDIARIES IN THE U.K AND OTHER COUNTRIES

- A planned maintenance schedule or regular inspection is recommended, replacing components as necessary.
- Replacement components are available direct from GLASDON.
- GLASDON cannot be held responsible for claims arising from incorrect installation, unauthorised modifications or misuse of the product.

Issue 2 March 2013 Stock no. C000/0418  
© Copyright 03/2013

Glasdon UK Ltd reserve the right to alter specifications without prior notice.



Glasdon U.K Limited

Preston New Road  
BLACKPOOL  
Lancashire FY4 4UL  
Tel: 01253 600410  
Fax: 01253 792558  
email: sales@glasdon-uk.co.uk  
web: www.glasdon.com